

SOL À GRAÇA
43

There's no place
like Lisbon.
There's no other city
where the sun kisses
the river with such
tenderness.

Fernando Pessoa

LISBON

ONE OF THE MOST
DESIRABLE DESTINATIONS

Lisbon, the capital of Portugal, has become one of the most desirable destinations for real estate investors and people looking for a new home. This city, rich in history and culture, offers a perfect balance between tradition and modernity, providing an unparalleled lifestyle.

Famous for its seven hills, which offer breathtaking views over the River Tagus, the city combines the charm of its Portuguese cobbled streets with a modern infrastructure, offering a high quality of life. The mild climate all year round, the rich and diverse gastronomy, and the hospitality of the locals make this a desirable place to live.

- **Belém Tower:** A symbol of the Age of Discovery, classified as a UNESCO World Heritage Site.
- **Jerónimos Monastery:** A masterpiece of Manueline architecture.
- **Praça do Comércio:** One of the largest and most beautiful squares in Europe, with incredible views over the river.
- **Bairro Alto:** Known for its vibrant nightlife and its restaurants and bars.
- **Chiado:** The arts and literature district, with historic cafés and luxury stores.
- **Parque das Nações:** A modern area with contemporary architecture, green spaces and the Lisbon Oceanarium.





LUXURY LIVING - LISBON, PORTUGAL

GRAÇA

IS ONE OF THE MOST TRADITIONAL
NEIGHBORHOODS IN LISBON

Located on one of Lisbon's highest hills, the Graça neighborhood is a real treasure. This historic neighborhood offers panoramic views of the city and the river, as well as a welcoming and authentic atmosphere that attracts locals and foreigners alike.

Its picturesque alleys, historic churches and stunning viewpoints, such as Miradouro da Senhora do Monte and Miradouro da Graça, offer breathtaking views. The neighborhood preserves the essence of Lisbon, with its old buildings, traditional tiles and a strong sense of community.

For those looking for a luxury experience, Graça does not disappoint. The area is full of gourmet restaurants, charming cafés and exclusive craft stores. Its proximity to São Jorge Castle and the Alfama district, one of the oldest in Lisbon, allows residents to become deeply involved in the local history and culture.

Living in Graça is synonymous with a distinctive lifestyle. The neighborhood offers a unique combination of tranquility and convenience, with easy access to all modern conveniences. Its green spaces, such as the Jardim da Cerca da Graça, are perfect for moments of leisure and relaxation.

Sightseeing itinerary



01. MIRADOURO DA GRAÇA

Start the day with panoramic views of Lisbon from this lookout point. The Miradouro da Graça, also known as Sophia de Mello Breyner Andresen viewpoint, offers a stunning view of the city and the Tagus River. It's a perfect spot for morning photos and to appreciate the city's layout.

02. CHURCH AND CONVENT OF GRAÇA

Visit this historic church and convent next to the lookout. Built in the 13th century, the church and convent have witnessed many significant events in Lisbon's history, including the 1755 earthquake. The interior features beautiful tiles and baroque architecture.

03. CERCA DA GRAÇA GARDEN

Take a relaxing walk in this nearby garden. The Jardim da Cerca da Graça is one of the largest green spaces in the historical center, offering a peaceful retreat with views of the castle and cityscape. It's a great spot for a leisurely stroll or a picnic.

04. VIA GRAÇA (RESTAURANT)

Enjoy lunch at this restaurant, known for its Portuguese cuisine and panoramic views of the city. The restaurant offers traditional dishes with a modern twist, and its terrace provides an excellent vantage point to enjoy your meal while overlooking Lisbon. The attentive service and curated wine selection complement the experience.

05. SANTA CLARA MARKET

Visit this market, known for its variety of antiques and second-hand items. Established in 1877, it is the oldest covered market in Lisbon. It offers a lively atmosphere and a glimpse into local culture, with vendors selling everything from vintage furniture to rare books.

06. FEIRA DA LADRA

Explore this market, with roots dating back to the 13th century. It is the city's oldest and most well-known fair, traditionally held on Tuesdays and Saturdays. The market is a treasure trove for antique hunters and those looking to find unique items and curiosities.

07. CHURCH OF SÃO VICENTE DE FORA

End the afternoon with a visit to this impressive church and monastery. The church, completed in 1627, is a masterpiece of Mannerist architecture. It houses the pantheon of the Braganza monarchs and features a stunning collection of azulejos (tiles) depicting the fables of La Fontaine.

08. VINO VERÁ (BAR)

End the day at the relaxed bars near Miradouro da Graça, such as VINO Verá. These bars offer a laid-back atmosphere where you can unwind with a drink while enjoying the evening views over Lisbon. It's a perfect way to conclude a day full of historical exploration and scenic beauty.



COOL. CLOSE. AMAZING.

it's impossible not
to fall in love with
Graça's charms

POINTS OF INTEREST

With a unique combination of history, culture and modernity, Graça is the perfect place to experience the true essence of Lisbon. Discover the points of interest you can't miss in this traditional neighborhood.



- 1 Graça Viewpoint
- 2 Via Graça (Restaurant)
- 3 Cerca da Graça Garden
- 4 Church and Convent of Graça
- 5 Santa Clara Market
- 6 Feira da Ladra
- 7 Church of São Vicente de Fora
- 8 Marquês de Pombal
- 9 Avenida da Liberdade
- 10 Airport
- 11 Saldanha (business district)
- 12 Caloust Gulbekian Foundation
- 13 Eduardo VII Park

AIRPORT ✈️
15 MINUTES

BEACH ☂️
30 MINUTES

THE BUILDING

SOL À GRAÇA 43

Welcome to “Sol a Graça 43”, an exclusive development located in the heart of Lisbon's traditional Graça district. With a modern design and luxury finishes, this new-build building offers three independent units, all of which are 3-bedroom apartments. Each apartment has a private outdoor area, providing an ideal space to enjoy Lisbon's mild climate.

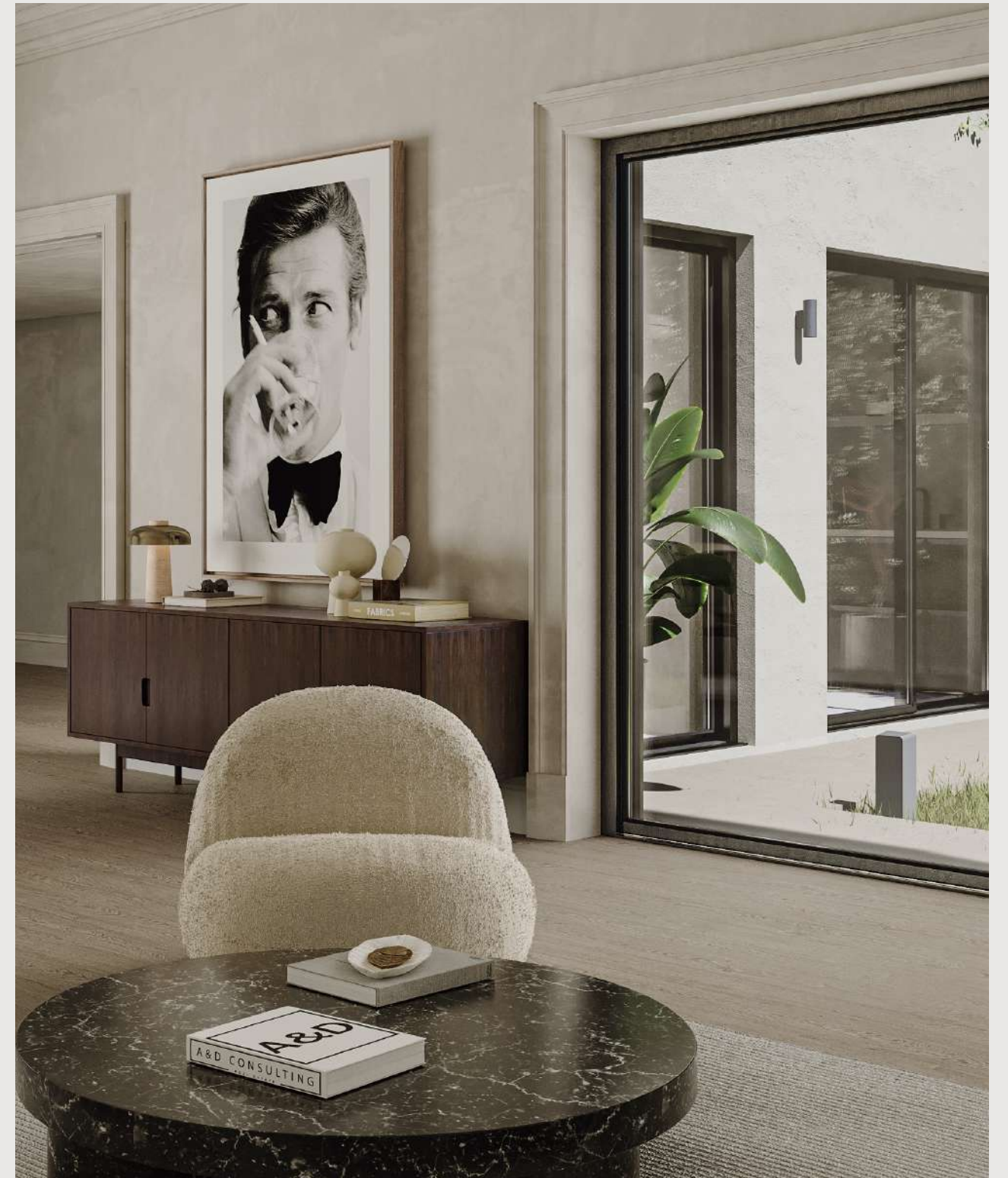
The development consists of 3 three-bedroom apartments, designed to offer comfort and functionality.

Each unit has been carefully planned to maximize space and natural light, creating welcoming and modern environments.

It stands out for its contemporary style, integrating harmoniously with the historic character of Graça.

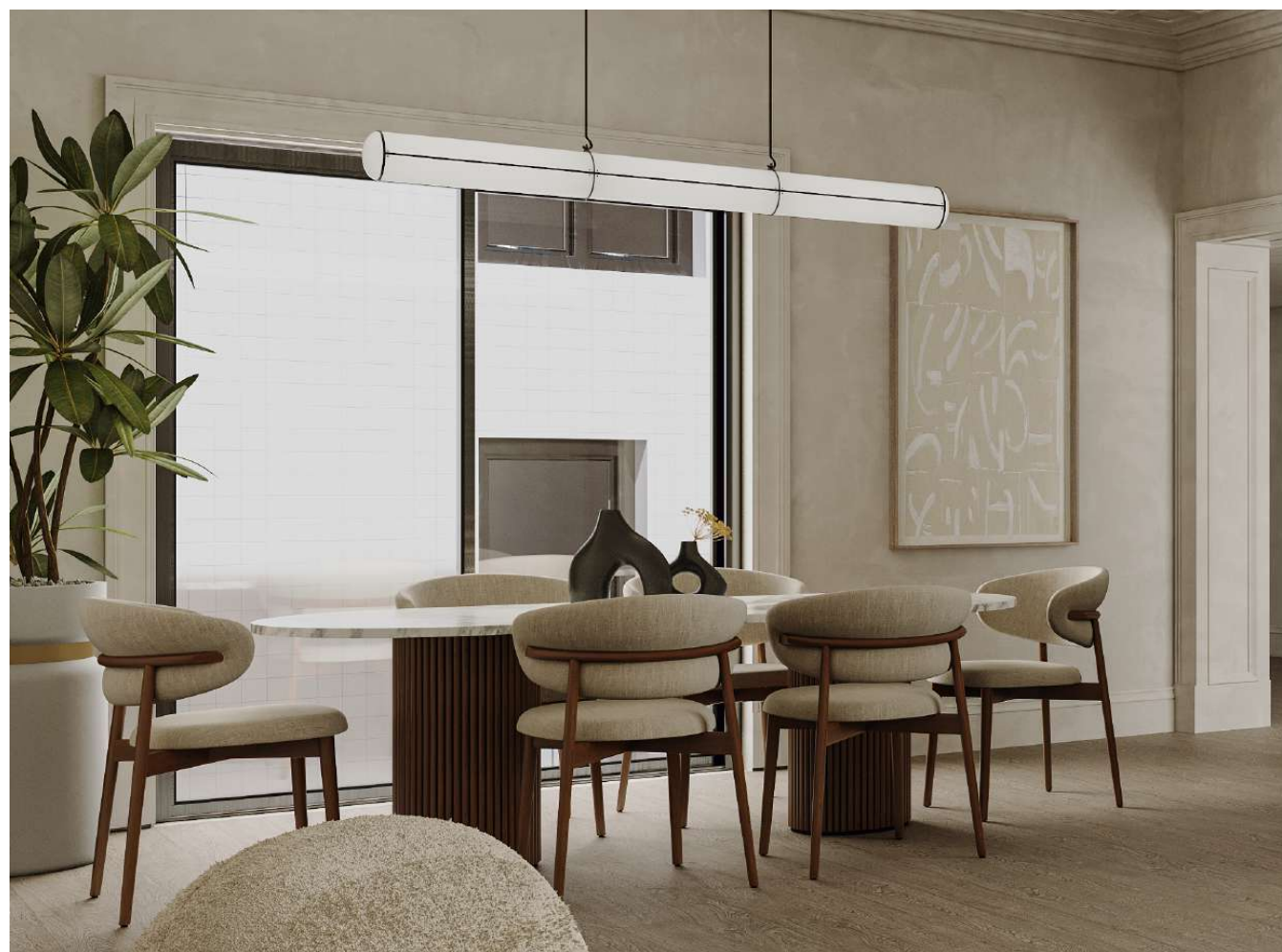
The modern architecture combines elegant lines and sophisticated materials, creating an exclusive and distinctive environment.

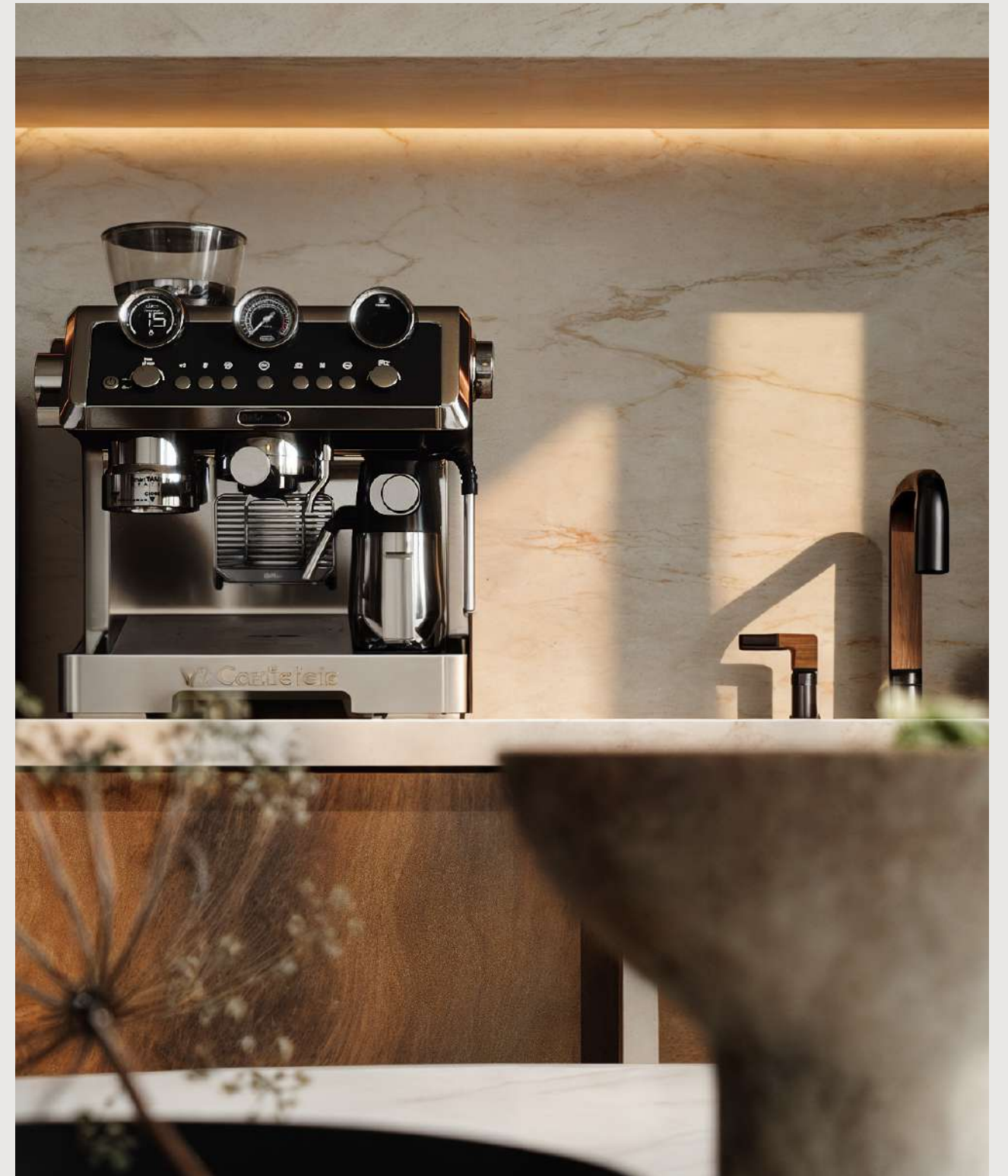




Each 3-bedroom apartment has a spacious and functional layout, with well-defined divisions and large areas that favor the comfort of residents.

- 3 UNITS
- 3 BEDROOMS
- NEW CONSTRUCTION
- MODERN STYLE
- PRIVATE OUTDOOR AREAS
- LUXURY FINISHES
- EXTERIOR AREAS
- PARKING













UNIT B

3-BEDROOM

215,04 SQM PRIVATE AREA
55,57 SQM OUTDOOR AREA

GROUND FLOOR



1ST FLOOR

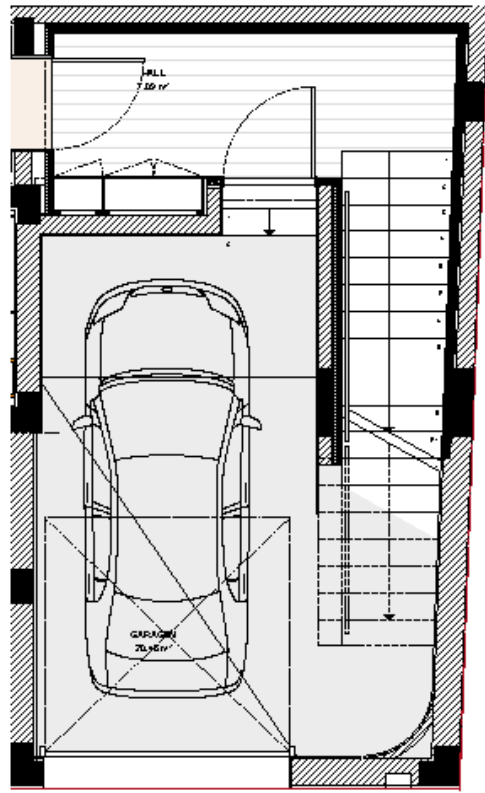


UNIT C

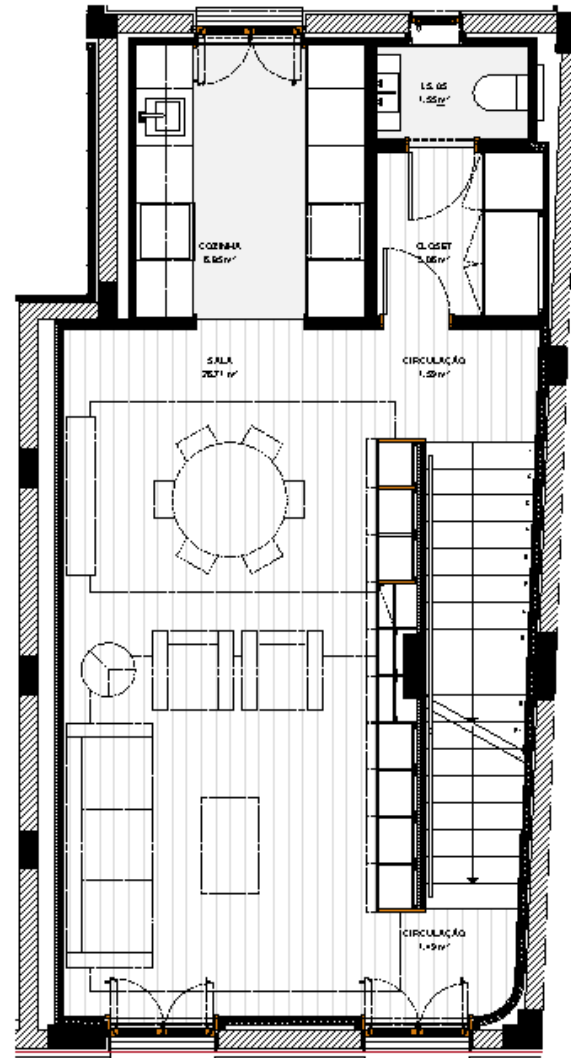
3-BEDROOM

201,33 SQM PRIVATE AREA
4,52 SQM OUTDOOR AREA

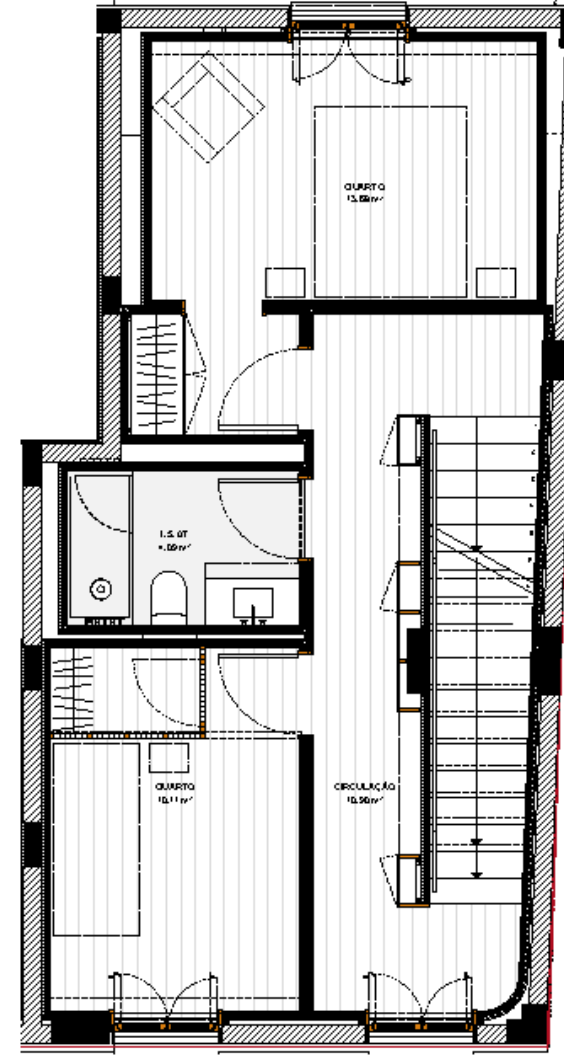
GROUND FLOOR



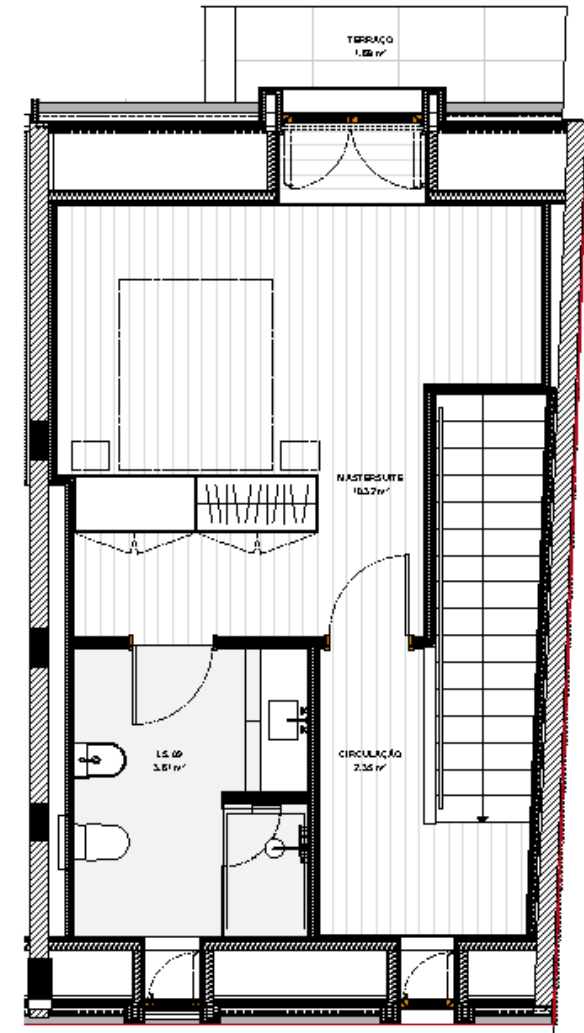
1ST FLOOR



2ND FLOOR



3RD FLOOR





SOL À GRAÇA
43

solagraca43.pt
info@aedconsulting.pt
(+351) 969 926 426
aedconsulting.pt

Sales Management:



The areas and images presented here are approximate, indicative and not contractual.